

*“Youth Homelessness”*

# Multidisciplinary Approaches to End Homelessness

A Continuum of Care Division Webinar Series

*Please sign in by typing your full name, title, and organization into the webinar chat box.*

# About the Webinar Series

## **Purpose**

These webinars provide an opportunity to engage with local and regional experts on best practices, advocacy tools and resources available to prevent and end homelessness in Riverside County.

## **Recorded Webinars**

After the live webinar has taken place, the recording will be added to our website.

## **Upcoming Webinars**

We are working on securing speakers for future webinars and would love to feature you or your agency.

Email [CoC@rivco.org](mailto:CoC@rivco.org) if interested.

# Agenda for Today

<b>10:00 – 10:05 AM</b>	<b>Welcome</b>	<b>HHPWS – Continuum of Care Staff: Tanya Torno, CoC Manager</b>
<b>10:05 – 10:30 AM</b>	<b>Operation SafeHouse</b>	Rainbow Marler, Street Outreach/Main Stay Director Matt Radican, Street Outreach Lead
<b>10:30 – 10:55 AM</b>	<b>A Sense of Home</b>	Cordell Thomas, Community Impact Specialist, Axis Foundation, Inc.
<b>10:55 – 11:00 AM</b>	<b>Q&amp;A: Please type your questions in the chat box. We will answer as many questions as possible at the end of the webinar.</b>	

*Please sign in by typing your full name, title, and organization into the webinar chat box.*



# OPERATION SAFEHOUSE

[HTTP://WWW.OPERATIONSAFEHOUSE.ORG](http://www.operationsafehouse.org)

OPERATION SAFEHOUSE





# YOUTH IN CRISIS

WHAT DOES THAT LOOK LIKE?



# Operation SafeHouse



## + Why do Youth Runaway?

- Young people who run away for long periods of time in the majority of cases do not run away because they are rebellious.
- They often run away because it's safer to leave home than it is to stay.
  - 46% physically abused
  - 17% sexually abused
  - 38% emotional abuse
- They run away because of family conflict, abuse, immediate danger, etc.



## + Consequences of Youth Homelessness

- Increased risk of mental health problems, poor physical health, suicide, etc.
  - 32% have attempted suicide
  - 3 times more likely to have major depression, conduct disorder, or PTSD
  - 60% of homeless youth have a diagnosable mental health condition
- 16 times more likely to be diagnosed with HIV
  - 7 times more likely to die from HIV
- 75% will drop out of school





# IF YOU FOUND A YOUTH ON THE STREET

WHAT WOULD YOU DO?





# NATIONAL SAFE PLACE

- Safe Place is a **National** Program that allows youth in crisis to seek safe shelter anywhere in the United States.
- Fire Department
- Police Station
- Libraries
- RTA
- Schools







# **Housing Programs**

**Emergency Shelters**

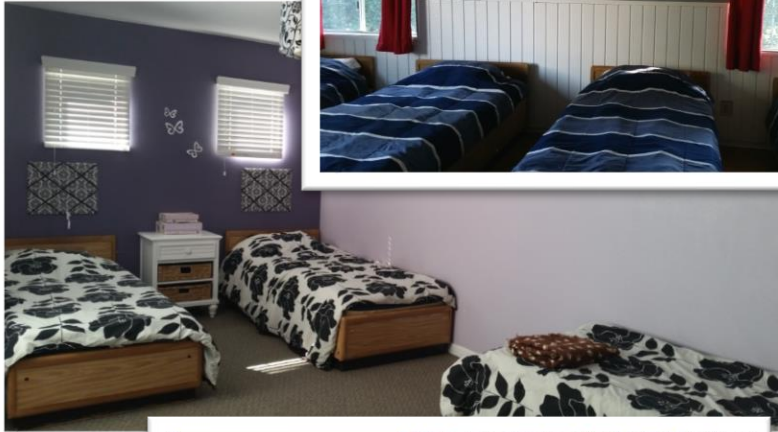
**Transitional Living Programs**

# Emergency Youth Shelter

- **Our Emergency Shelter program provides immediate help 24 hours a day, 7 days a week**
- **The 21-day program gives teens and their families hope that things CAN get better**



OPERATION SAFEHOUSE

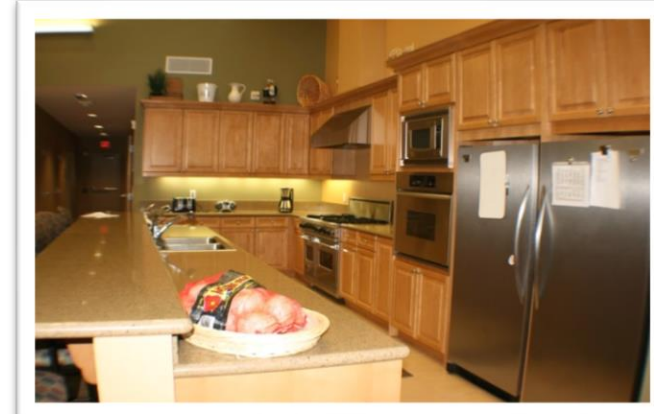
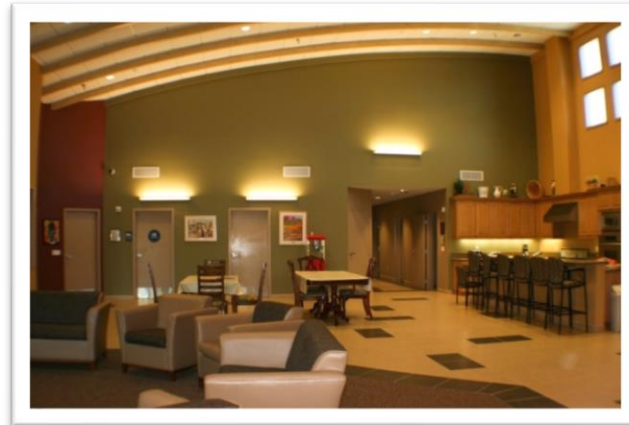


- Individual, Group, and Family Counseling
- Education on Site
- Recreation
- Safe Environment
- 24 Hour Staff



# SafeHouse of the Desert

OPERATION SAFEHOUSE



# The Main S.T.A.Y. Shelter

- **Emergency shelter for Transitional Aged Youth (TAY), ages 18-24.**
- **An alternative to your traditional adult shelter, with only 4 beds, 2 male and 2 female.**



4509 Main Street, Riverside, CA 92501  
951-515-6155





- **Up to 30-day program.**
- **Intensive Case Management, with a focus on permanent stable housing.**
- **On-Site Clinician.**
- **Life Skills Training.**
- **Provides three meals a day.**



# Transitional Living Program

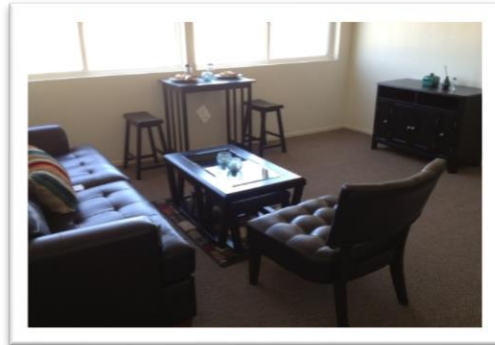
- **Our Transitional Living Program is aimed at helping homeless youth, age 18-21.**
- **We provide education (GED/college) and employment assistance, individualized case management and specialized therapy.**



**MAIN STREET TRANSITIONAL LIVING PROGRAM  
APARTMENTS**

4509 Main Street, Riverside, CA 92501  
951-369-4921

# Harrison House of the Desert





- The purpose of the **Street Outreach** program through **Operation SafeHouse**, is to increase youth safety and self-sufficiency for homeless and at-risk youth ages 11-24.
- The **Street Outreach** team operates through-out the **County of Riverside** as well as utilizes community partnerships.
  - Youth Opportunity Centers
  - Local City Officials
  - County Partners (**Behavioral Health & Housing Authority**)



## Street Outreach Program



# Street Outreach Program

- **Services provided:**
  - **Housing resources and referrals**
  - **Case management**
  - **Mental Health resources**
  - **Education assistance**
  - **Transportation (Tentative)**







- **The Cup of Happy program focuses on mental health for youth 16-25 years of age.**
- **Overcome mental health stigmas in school settings.**
- **Teach healthy coping skills.**
- **Spread mental health awareness.**
- **LGBTQIA+ support groups.**
- **Mentoring programs.**
- **Participate in the Directing Change film competition.**

## **Cup of Happy**

# Anti-Human Trafficking



- **What's the average age for someone to be Trafficked?**  
**12 – 14 years old**
- **How long does it take for a pimp to approach someone on the street?**  
**Within the first 1 hour of leaving home**



# Anti-Human Trafficking

- 11 – 17 year olds
- SafeHouse serves as co-chair of the Riverside County Anti-Human Trafficking task force ensuring comprehensive care to all trafficking victims.
- Our goal is to restore dignity to trafficking victims.



OPERATION SAFEHOUSE



 **Operation SafeHouse**

 **(951) 515-4614 & (951)-858-4063**

 **[mradican@operationsafehouse.org](mailto:mradican@operationsafehouse.org)**

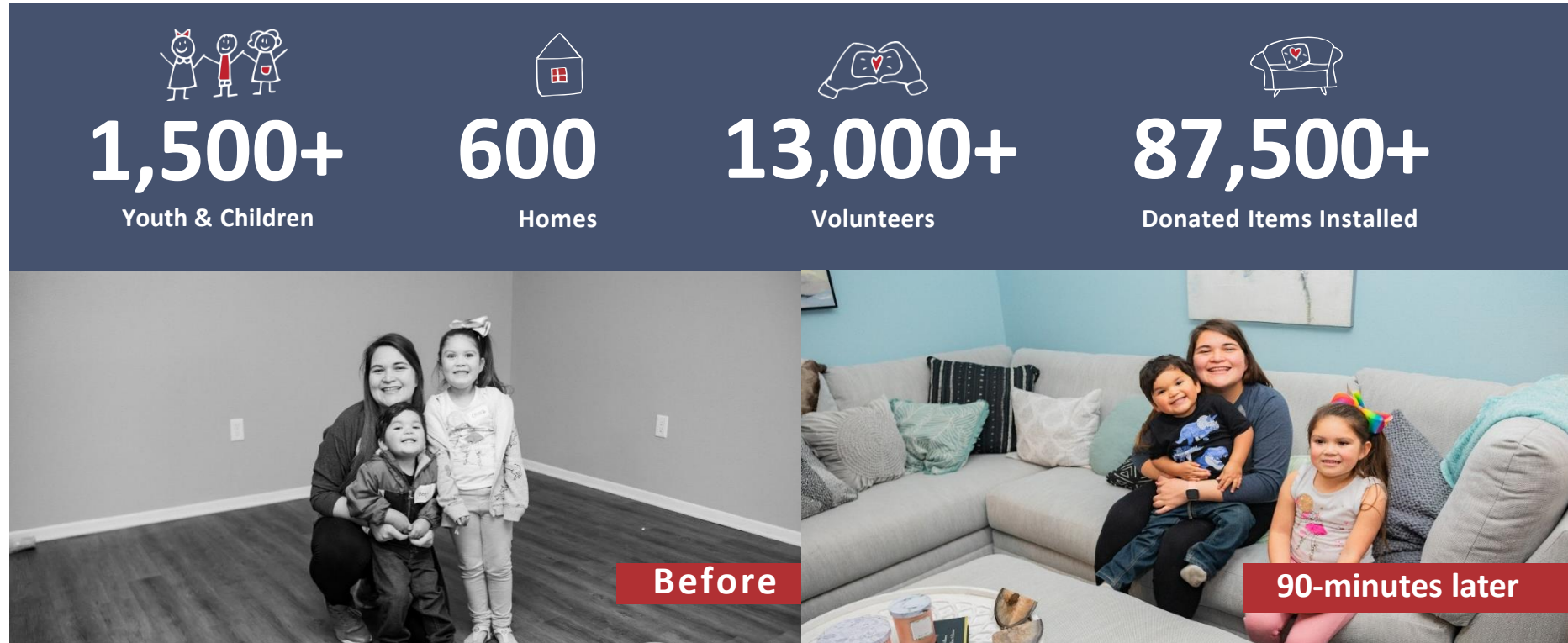
**THANK YOU**

• **[HTTP://WWW.OPERATIONSAFEHOUSE.ORG/](http://www.operationsafehouse.org/)**

# A SENSE OF HOME







**A Sense of Home (ASOH)** prevents homelessness by providing community created, first-ever homes for youth aging out of foster care with donated furniture and home goods.

# A Solution to Homelessness

## 50% of the Homeless Population Spent Time in Foster Care

Furnishing a home is a weapon against homelessness: “Furniture provision services reduces tenancy failure . . . a lack of furniture has adverse psychological impacts.” \*



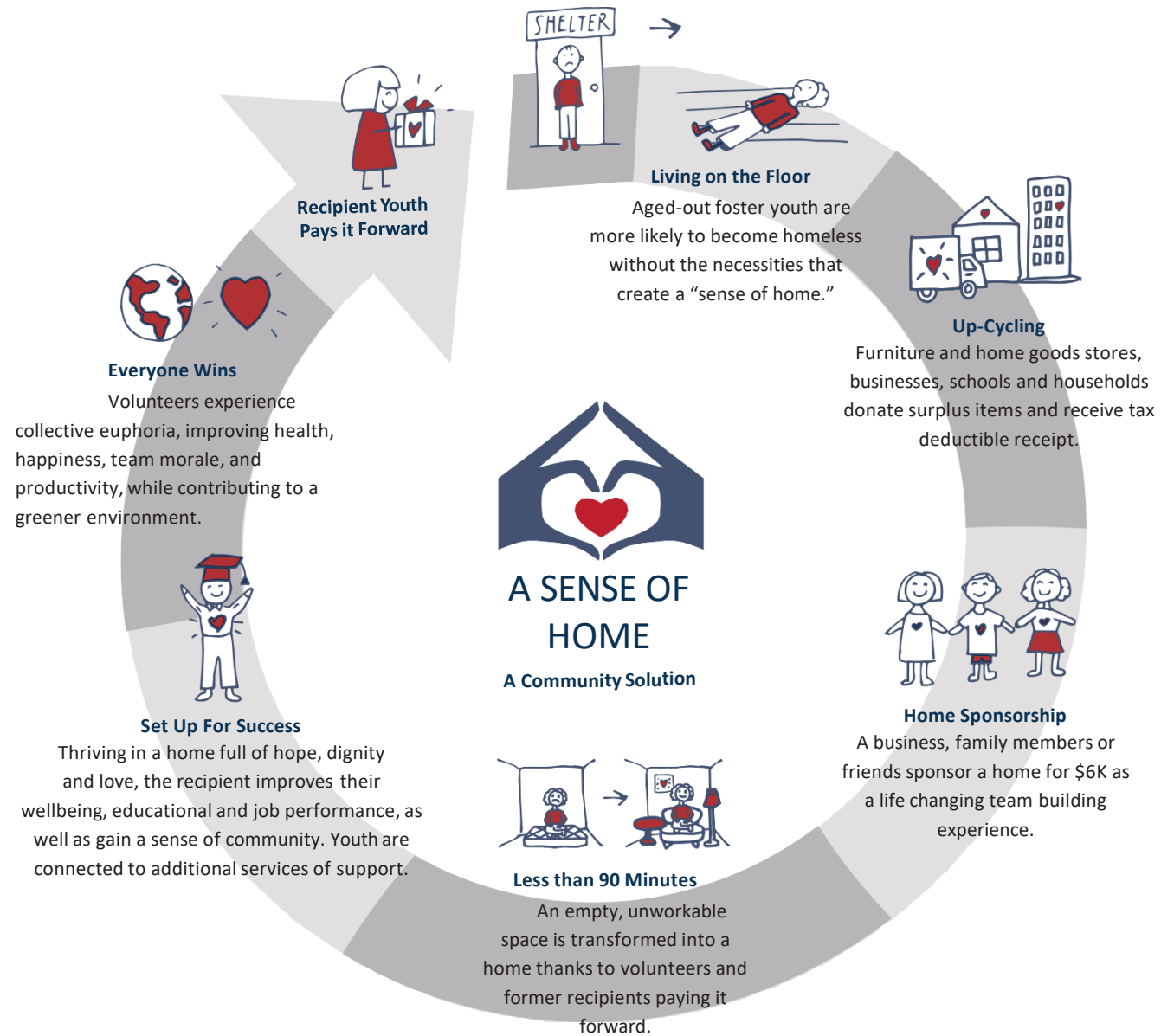
## A Roof is Not Enough – Upcycling & Volunteers Change Everything

In 90-minutes a community of loving volunteers harnesses the excess capacity business model to furnish a space with donated goods. Without a bed, basic kitchen items, and a place to work, eat, and study, self-sufficiency is not possible.

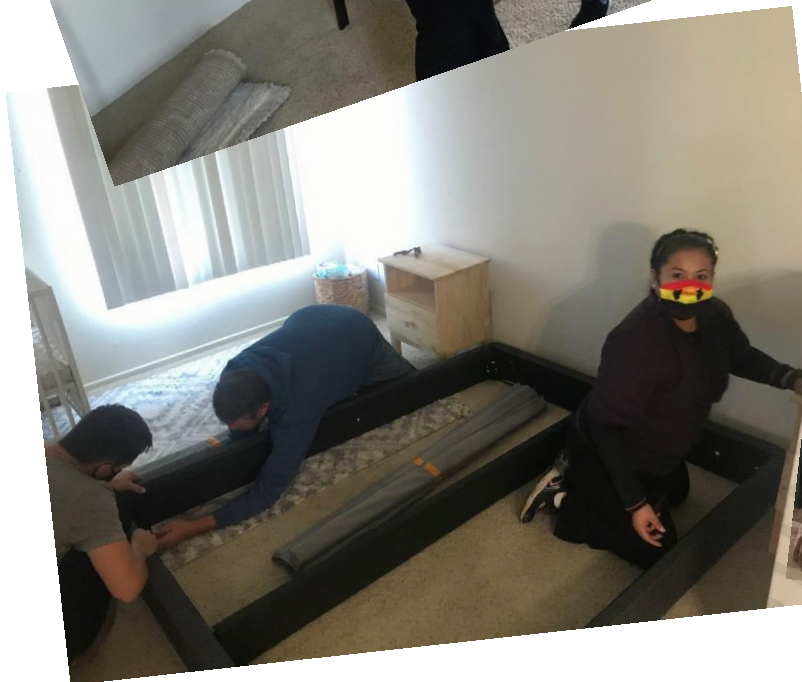


\*(CRESR at Sheffield Hallam University, “Assessment of the need for furniture” Aimee Ambrose, et al, Mar. 2016)

# Scalable Model













# Questions and Comments

