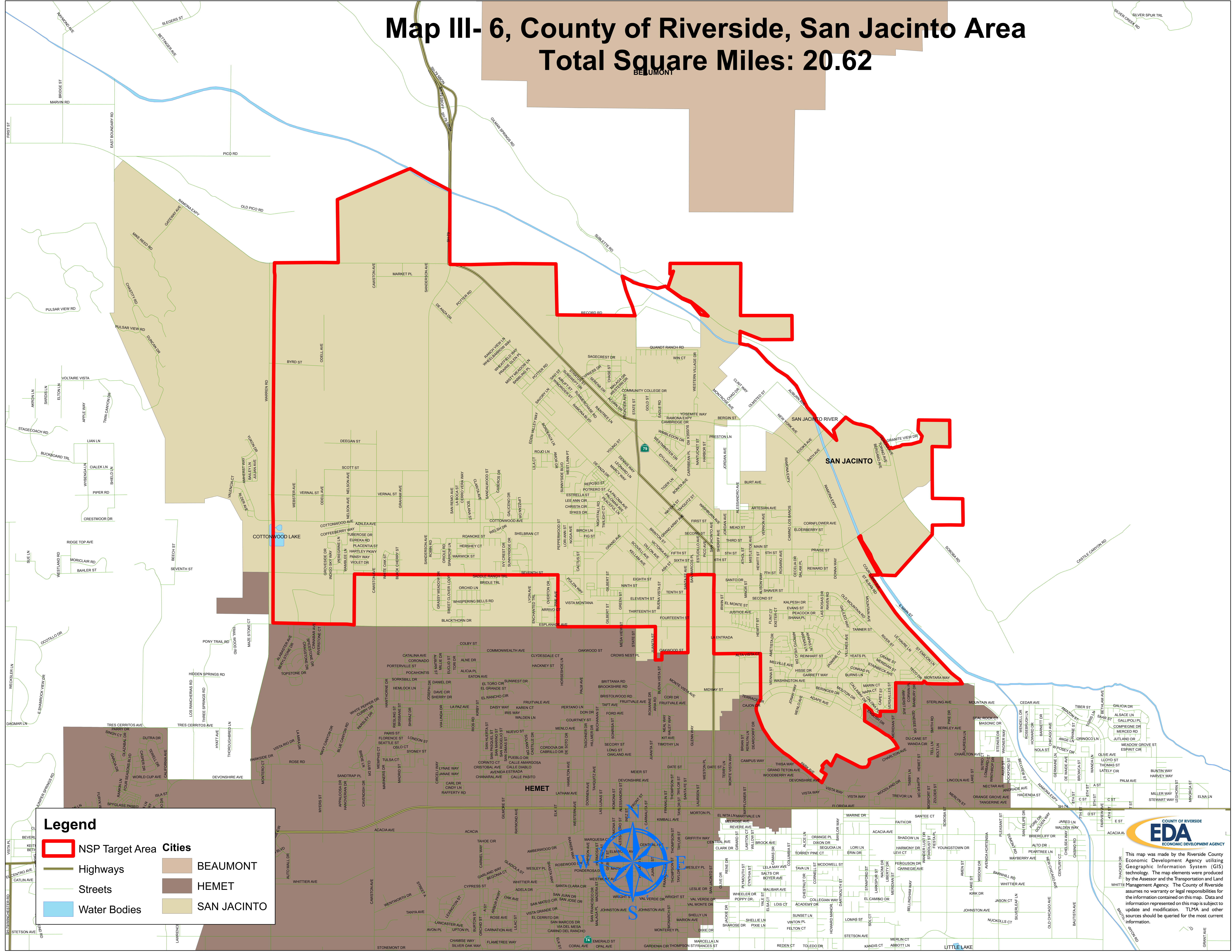


Map III- 6, County of Riverside, San Jacinto Area

Total Square Miles: 20.62



Legend

- NSP Target Area
- Highways
- Streets
- Water Bodies

Cities

- BEAUMONT
- HEMET
- SAN JACINTO

COUNTY OF RIVERSIDE
EDA
 ECONOMIC DEVELOPMENT AGENCY

This map was made by the Riverside County Economic Development Agency utilizing Geographic Information System (GIS) technology. The map elements were produced by the Assessor and the Transportation and Land Management Agency. The County of Riverside assumes no warranty or legal responsibilities for the information contained on this map. Data and information represented on this map is subject to update and modification. TUMA and other sources should be queried for the most current information.